



De Soto, KS Highway Frontage Lots

K-10 Highway & Lexington Avenue (NEQ), De Soto, KS



SALE PRICE: \$12-\$14/SF | 1 TO 5.24 ACRES

DEMOGRAPHICS

	5 min.	10 min.	15 min.
Estimated Population	4,989	11,495	19,281
Avg. Household Income	\$133,549	\$131,118	\$145,565

- Lots available on the north side of K-10 Highway
- Located in De Soto retail corridor with new tenants including Burnt End BBQ, Taco Bell, O'Reilly Auto Parts, Domino's, Jimmy John's, and more
- Join De Soto, KS development growth including \$4 Billion Panasonic Plant along with other large proposed projects
- KDOT is planning significant K-10 Highway widening to accomodate future growth



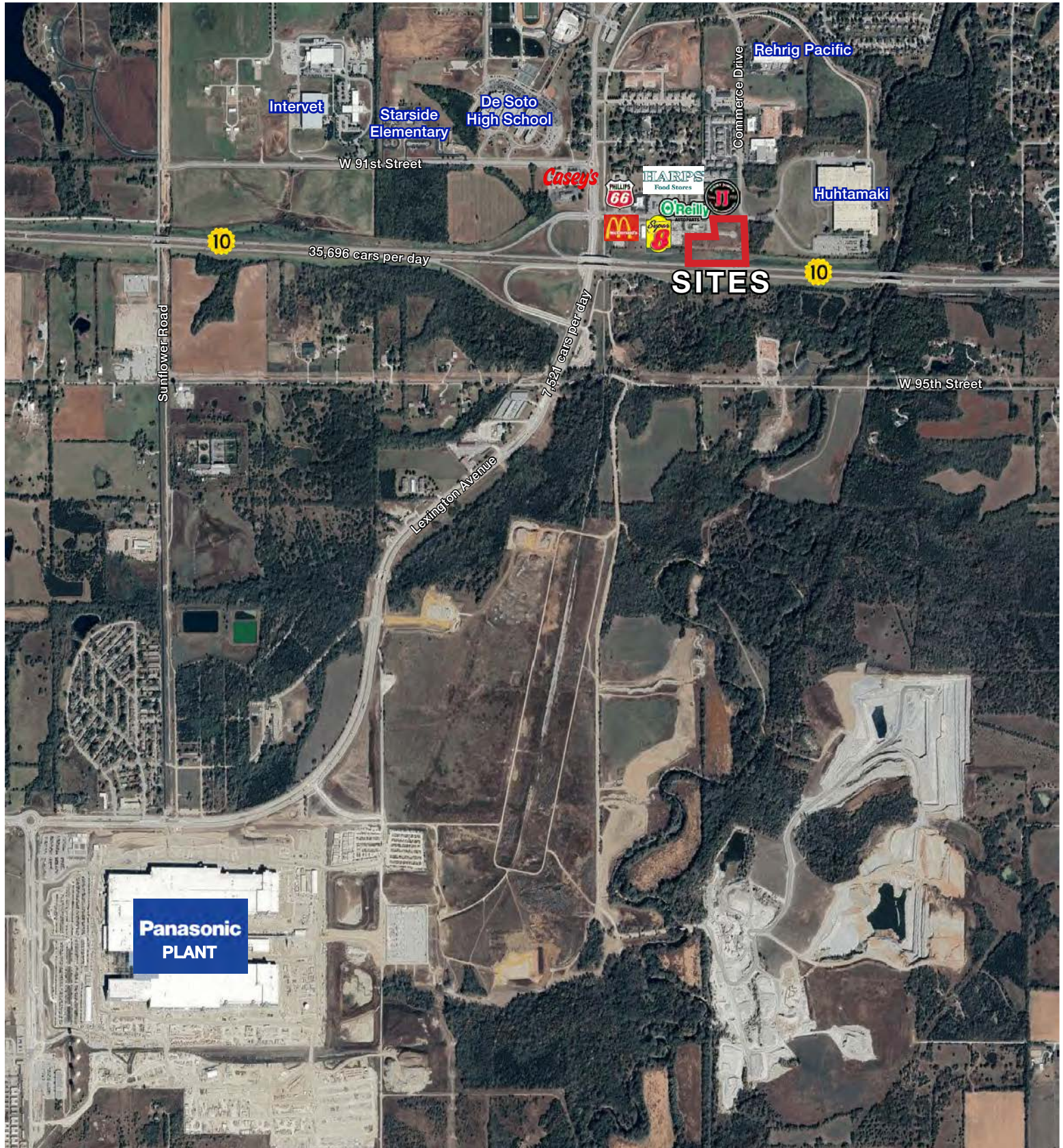
CLICK HERE TO VIEW MORE
LISTING INFORMATION

For More Information Contact:

Exclusive Agent

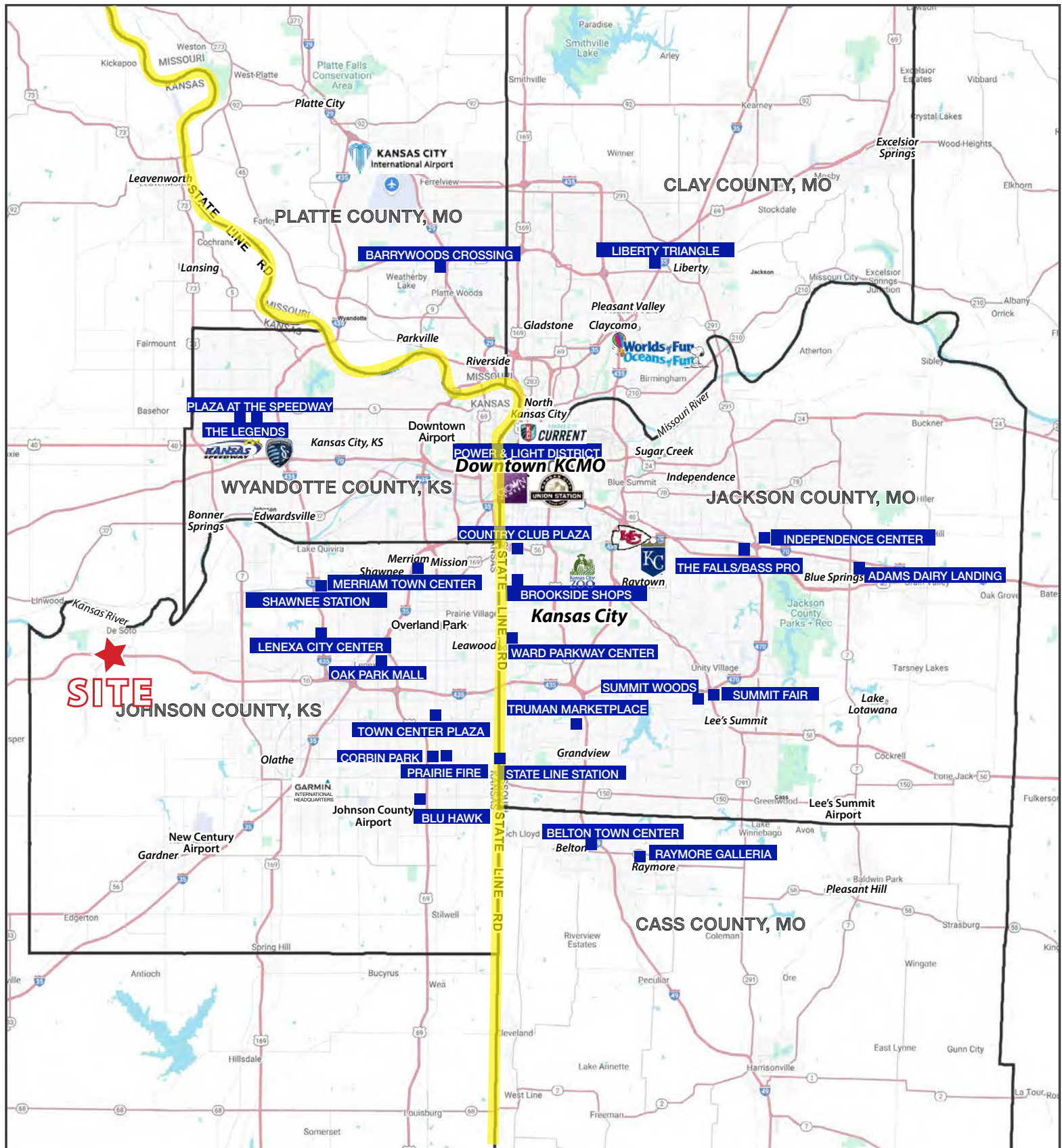
PHIL PECK | 816.412.7364 | ppeck@blockandco.com

AERIAL



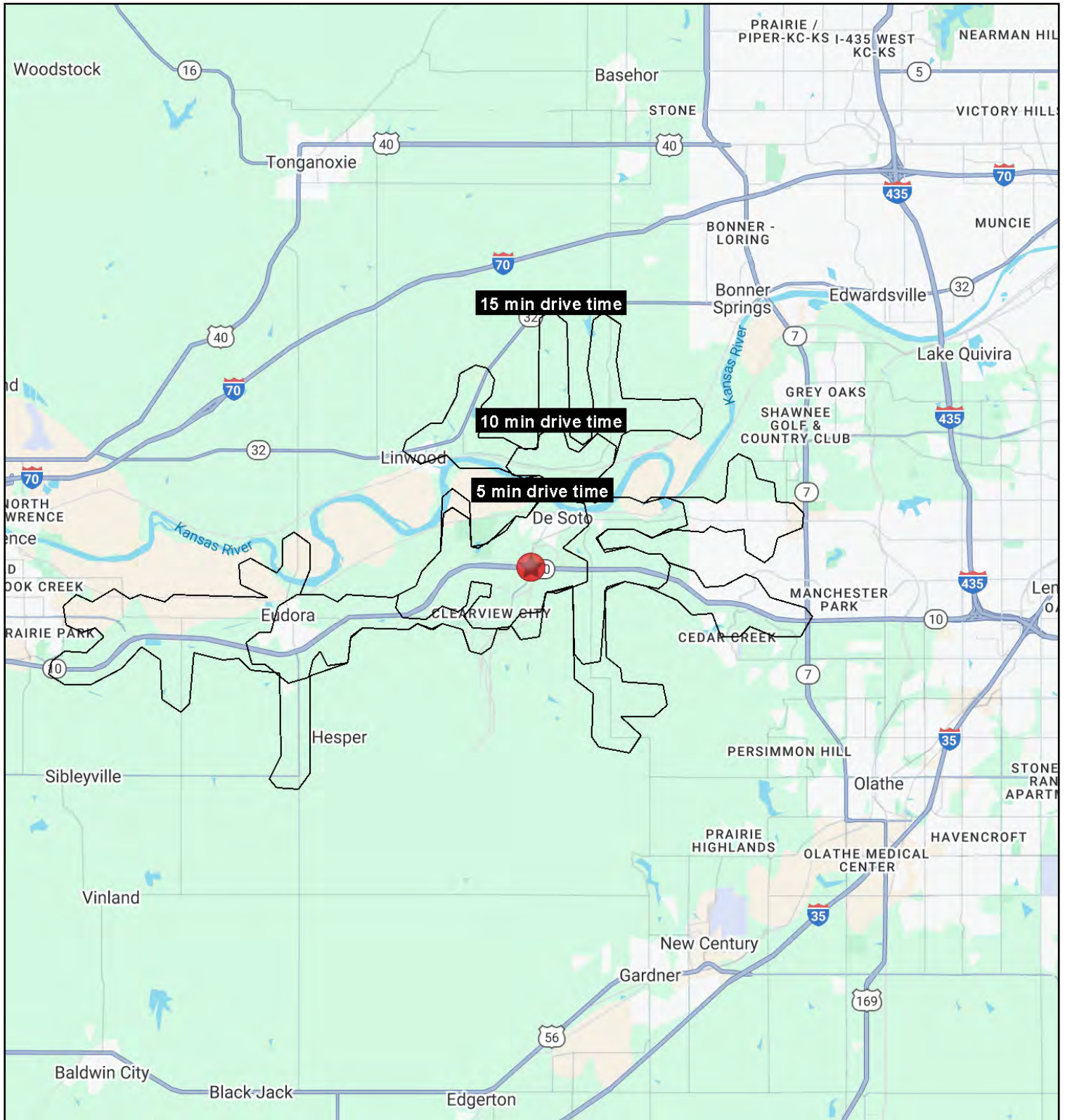
De Soto, KS Highway Frontage Lots

K-10 Highway & Lexington Avenue (NEQ), De Soto, KS



De Soto, KS Highway Frontage Lots

K-10 Highway & Lexington Avenue (NEQ), De Soto, KS





De Soto, KS Highway Frontage Lots

K-10 Highway & Lexington Avenue (NEQ), De Soto, KS

K-10 & Lexington Ave De Soto, KS 66018

5 min
drive time

10 min
drive time

15 min
drive time

Population

2025 Estimated Population	4,989	11,495	19,281
2030 Projected Population	5,270	11,703	19,874
2020 Census Population	4,313	10,806	17,809
2010 Census Population	4,072	10,205	15,367
Projected Annual Growth 2025 to 2030	1.1%	0.4%	0.6%
Historical Annual Growth 2010 to 2025	1.5%	0.8%	1.7%
2025 Median Age	38.0	38.3	39.5

Households

2025 Estimated Households	1,865	4,269	7,070
2030 Projected Households	2,008	4,500	7,508
2020 Census Households	1,597	3,928	6,490
2010 Census Households	1,432	3,612	5,499
Projected Annual Growth 2025 to 2030	1.5%	1.1%	1.2%
Historical Annual Growth 2010 to 2025	2.0%	1.2%	1.9%

Race and Ethnicity

2025 Estimated White	82.6%	86.5%	87.7%
2025 Estimated Black or African American	1.1%	1.2%	1.4%
2025 Estimated Asian or Pacific Islander	0.7%	0.7%	1.3%
2025 Estimated American Indian or Native Alaskan	0.7%	0.8%	0.6%
2025 Estimated Other Races	14.9%	10.7%	9.0%
2025 Estimated Hispanic	17.4%	11.2%	9.2%

Income

2025 Estimated Average Household Income	\$133,549	\$131,118	\$145,565
2025 Estimated Median Household Income	\$99,996	\$109,898	\$119,041
2025 Estimated Per Capita Income	\$50,038	\$48,805	\$53,446

Education (Age 25+)

2025 Estimated Elementary (Grade Level 0 to 8)	5.7%	3.8%	2.7%
2025 Estimated Some High School (Grade Level 9 to 11)	5.4%	4.5%	3.6%
2025 Estimated High School Graduate	25.2%	28.1%	23.5%
2025 Estimated Some College	19.2%	19.4%	18.8%
2025 Estimated Associates Degree Only	7.5%	6.9%	6.8%
2025 Estimated Bachelors Degree Only	25.5%	24.2%	27.8%
2025 Estimated Graduate Degree	11.5%	13.1%	16.8%

Business

2025 Estimated Total Businesses	109	260	546
2025 Estimated Total Employees	3,889	5,131	9,117
2025 Estimated Employee Population per Business	35.6	19.7	16.7
2025 Estimated Residential Population per Business	45.7	44.2	35.3

©2025, Sites USA, Chandler, Arizona, 480-491-1112 Demographic Source: Applied Geographic Solutions 5/2025, TIGER Geography - RS1